

DEDICATION PROGRAM

MALCOLM
ELEMENTARY SCHOOL

PUBLIC SCHOOL SYSTEM

MEMORIAL WEEK
APRIL 15, 16, 17, 18, 1941

SAULT STE. MARIE
MICHIGAN

Memorial Program

Wednesday, April 16

8:15 P. M.



- Invocation Dr. R. W. Stoakes
Pastor, Central Methodist Church
- “Hear My Prayer” *Kopylof*
High School Choir
- Introduction of the Speaker Foss Elwyn
Superintendent of Schools
- Memorial Address Roy W. Hamilton
Professor of English, Alma College
- “Prayer” *Kountz*
- “Oh Blest Are They” *Tschaikowsky*
High School Choir
- Lines From Rugby Chapel *Matthew Arnold*
John Traige, Junior and Former Student of Park School
- Dedication of the New School T. B. McKinney
President of the Board of Education
- Unveiling of the Portrait Robert Bishop
President of the Teachers Club
- “The Lord’s Prayer” *Mallot*
Shirley Traverse—Cynthia Hotton, Accompanist
- Benediction Rev. R. C. Johnson
Pastor of the Baptist Church
-
-

●

George G. Malcolm's Educational Record

●



Attended district schools, Oakland County, Michigan.

Graduate of Pontiac, Michigan High School, 1902.

A.B. Degree, University of Michigan, 1906.

A.M. Degree, Teachers College, Columbia University, 1926.

Principal of Norway, Michigan High School, 1907—1909.

Superintendent of Schools, Norway, Michigan, 1906—1915.

Principal of Port Huron, Michigan High School, 1915—1916.

Superintendent of Schools, Sault Ste. Marie, 1916—1940.

Member of Board of Directors, Michigan Teachers Retirement Fund.

President of Michigan Superintendents Association.

Buildings completed during Mr. Malcolm's superintendency: High School, Junior High School, Manual Arts, and Jefferson.

"Lines" From Rugby Chapel

By

Matthew Arnold

Coldly, sadly descends
The autumn evening. The fields
Strewn with their dank yellow drifts
Of wither'd leaves, and the elms,
Fade into dimness apace,
Silent;—hardly a shout
From a few boys late at their play!
The lights come out in the street,
In the school-room windows; but cold,
Solemn, unlighted, austere,
Through the gathering darkness, arise
The Chapel walls, in whose bound
Thou, my father! art laid.

There thou dost lie, in the gloom
Of the autumn evening. But ah!
That word, *gloom*, to my mind
Brings thee back in the light
Of thy radiant vigour again!

.

O strong soul, by what shore
Tarriest thou now? For that force,
Surely, has not been left vain!
Somewhere, surely, afar,
Is practiced that *strength*,
Zealous, beneficent, firm!

Yes, in some far-shining sphere,
Still thou performest the word
Of the Spirit in whom thou dost live,
Prompt, unwearied as here!
Still thou upraisest with zeal
The humble good from the ground,
Sternly represses the bad.
Still, like a trumpet, dost rouse
Those who tread the border-land dim
'Twixt vice and virtue; reviv'st,
Succorest;—this was thy work,
This was thy life upon earth.

Thou wouldst not *alone*
Conquer and come to thy goal,
Leaving the rest in the wild.
We were weary, and were
Fain to drop down and to die.
Still thou turnedst, and still
Beckonest the trembler, and still
Gavest the weary thy hand!
If, in the paths of the world,
Stones might have wounded thy feet,
Toil or dejection have tried
Thy spirit, of that we saw
Nothing! to us thou wert still
Cheerful, and helpful, and firm.

And through *thee* I believe
In the noble and great who are gone;
Yes! I believe that there lived
Others like thee in the past.
Souls temper'd with fire,
Fervent, heroic, and good
Helpers and friends of mankind.
Servants of God!—or sons
Shall I not call you? because
Not as servants ye knew
Your Father's innermost mind,
His, who unwillingly sees
One of his little ones lost—
Yours is the praise, if mankind
Has not as yet in its march
Fainted, and fallen, and died!

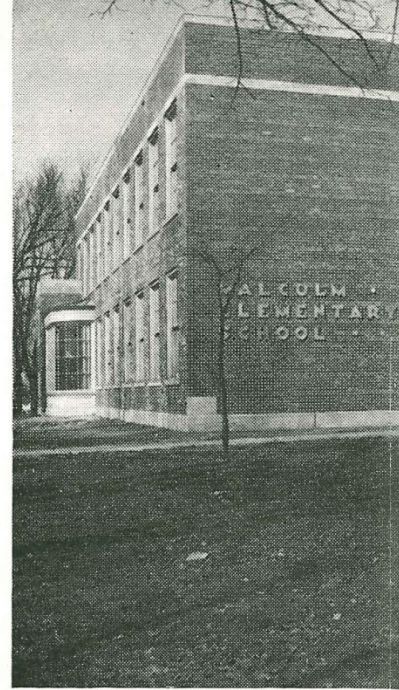
Then in such hour of need—
Ye, like angels, appear;
Languor is not in your heart,
Weakness is not in your word,
Weariness not on your brow.
Ye alight in our van; at your voice,
Panic, despair, flee away.
Ye move through the ranks, recall
The stragglers, refresh the outworn,
Praise, re-inspire the brave.
Order, courage, return.
Ye fill up the gaps on our files,
Strengthen the wavering line,
Stablish, continue our march,
On, to the bound of the waste,
On, to the city of God.

**VIEWS SHOWING FEATURES
OF
MALCOLM
ELEMENTARY SCHOOL**

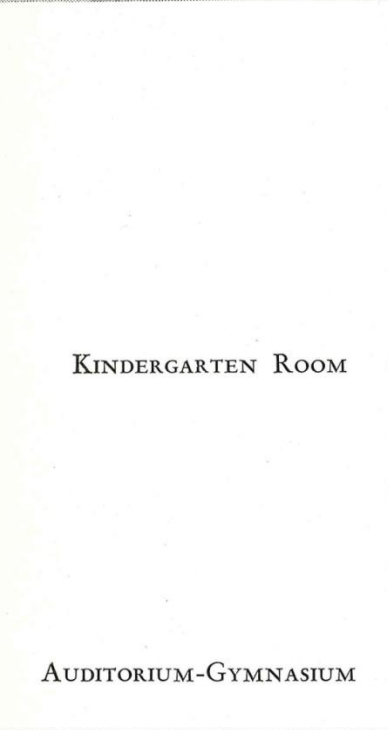
**SAULT STE. MARIE
MICH.**



FOYER



SOUTH



KINDERGARTEN ROOM



AUDITORIUM-GYMNASIUM

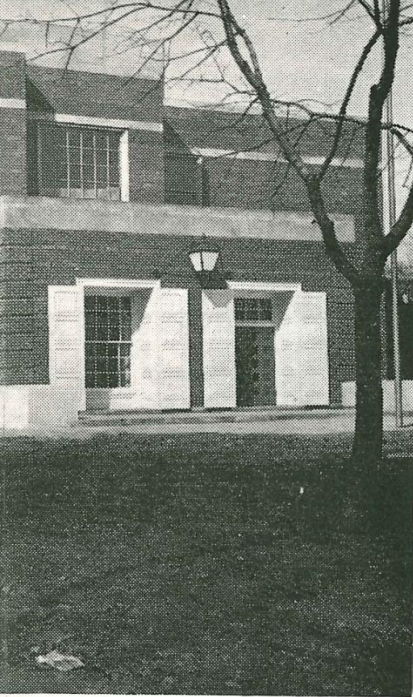
VIEWS SHOW

MALCOLM
ELEMENTARY

SAULT STEPHEN
MICHIGAN

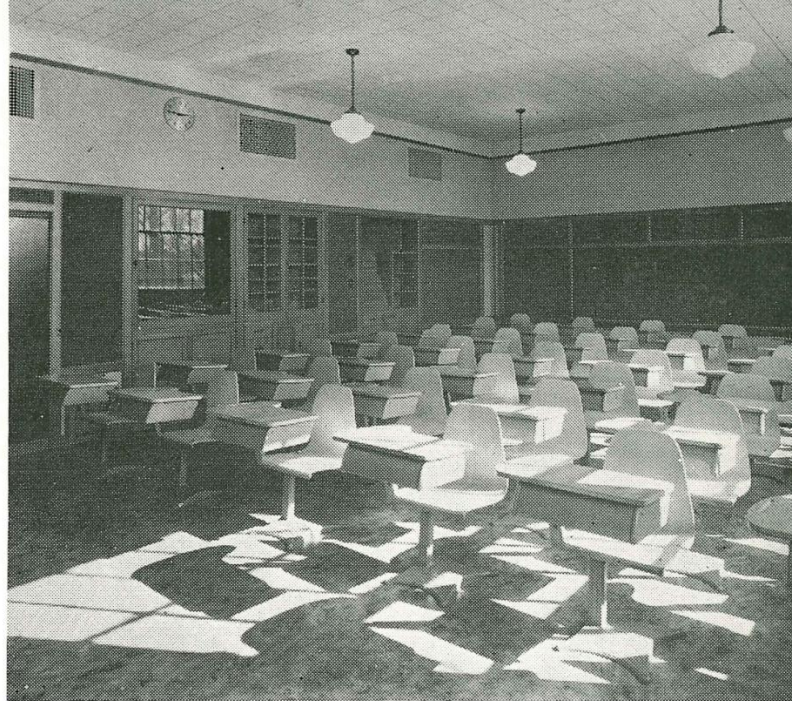
KITCHEN





ENTRANCE

CLASSROOM

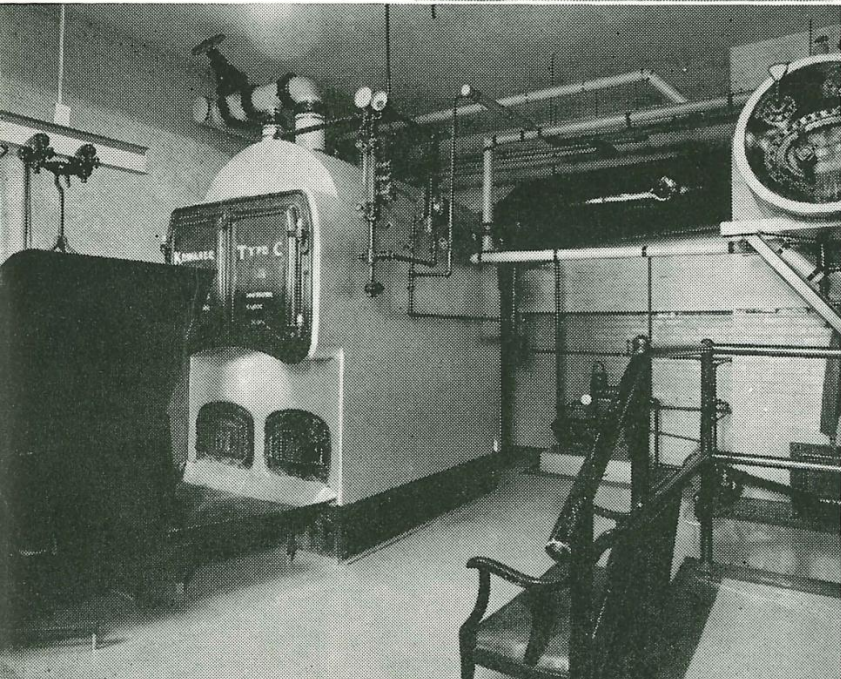


ING FEATURES
F
OLM
Y SCHOOL
E. MARIE
H.



FIRST FLOOR
CORRIDOR

FURNACE ROOM



OPPORTUNITY ROOM



Resolution of the Board of Education

●

WHEREAS, The Public Schools of the City of Sault Ste. Marie, Michigan, have lost their greatest and most respected friend, through the death of George G. Malcolm;

WHEREAS, his years of progressive, unselfish, and untiring service to the Schools and to the Community are reflected in our everyday contacts with tangible and intangible evidence;

WHEREAS, The system of public schools of this City are in themselves a lasting tribute to a man whose individual leadership was responsible for their success as institutions of learning and character development;

WHEREAS, the graduates of our system of education are and ever will be indebted to George G. Malcolm, whose kindly interest in all of their welfare has made them better citizens of this Community;

WHEREAS, the people of this Community are indebted to George G. Malcolm for his many and continuous acts of service to the City of Sault Ste. Marie;

WHEREAS, the mere recital of his achievements and our indebtedness can never properly describe the bond of friendship which has existed in the past, exists in the present, and will ever exist in the future between the people of this Community and George G. Malcolm;

WHEREAS, we desire to dedicate some small token of that friendship, which shall act as a constant reminder of that friendship;

NOW THEREFORE BE IT RESOLVED THAT;

The elementary School formerly known as the Park School, and recently destroyed by fire, and which is now in the process of reconstruction, be and it henceforth shall be known as the MALCOLM ELEMENTARY SCHOOL.

Unanimously adopted by the Board of Education this 2nd day of November, 1940.

History of the School



The Malcolm Elementary School is the third to occupy these grounds. From about 1890 to 1899 the West End School, a one story, two-room structure, was situated at the intersection of Magazine and Ridge Streets. The remainder of the grounds were used for a playground, bicycle racing track, baseball park, and fair-grounds. This building was moved to Fort Street, where it has been used by the City for various purposes ever since. In 1900, the eight-room and gymnasium Park School was opened, and saw over forty years of service, being destroyed by fire in April, 1940. On the same site, and on much of the same foundation, has been erected the beautiful and modern Malcolm Elementary School, opened in April, 1941.



Architect

WARREN S. HOLMES CO.

LANSING, MICHIGAN

Board of Education

Sault Ste. Marie Public Schools

THEODORE MCKINNEY, *President*

DONALD FINLAYSON

CLAYTON SCHENK

ROY PETERSON, *Treasurer*

ROBERT KLINE, JR.

BESSIE JONES, *Secretary*

●

School Organization

Superintendent of Schools	FOSS ELWYN
Principal Malcolm Elementary School	CARL STAFFORD
Supervisor of Grade Schools	ALICE DOBIE
Kindergarten	MARY FLEMING
First Grade	EVA BURDICK
Second Grade	GLADYS RYAN
Third Grade	ELEANOR CHRISTNER
Fourth Grade	HELEN NIEMI
Fifth Grade	MILDRED HANSON
Opportunity Room	MERLE QUINLAN

The Malcolm Elementary School

●

In designing the new Malcolm Elementary School, the Architects were faced with the problem of not only planning a modern elementary school, but of doing so within the limits established by the use of as much of the old building as possible. By reusing part of the old walls and the old basement, and adding a new wing to the west, this was accomplished at a considerable saving to the School District. By refacing of walls and new windows the old portions were successfully masked to effect an harmonious whole.

The neo-colonial design for the exterior was established as fitting and logical for this type of building; being of a domestic type, it has a distinct appeal to all and is a style which will endure for years to come.

The interior of the building is a revelation to many in its apparent usability from an educational angle. Particularly of note are the classrooms with built-in cases lining one entire wall of each room, their colorful linoleum floors, acoustical ceilings, and the attractive color scheme of each. The Kindergarten has been designed particularly to attract and interest the smallest pupil and is equipped with the latest innovations, such as pool, sandbox, miniature kitchenette, toilet, etc. The walls of this room and the first grade have been finished in cork carpet to provide a maximum of tacking space.

The corridors have a wainscot of linoleum which has replaced the cold brick or tile wainscots so often seen in school buildings.

The playroom which was part of the old building has been remodeled into an attractive and usable auditorium-gymnasium and can serve the community as well as the school. A small kitchen in connection with this room adds greatly to its usability.

The entire building is a well-built, attractive and efficient plant built with the thought in mind of giving Sault Ste. Marie the last word in up-to-date educational facilities and will stand for many years as an example of careful planning by Mr. Malcolm, the Board of Education, and your Architects.

Thoughts On The New School

By

Superintendent Foss Elwyn

The beautiful Malcolm Elementary School stands as the latest monument to the citizens of this city who believe in education. This belief has a long tradition behind it and many have given of their lives and substance to this end. It will continue in the years that lie ahead, for proper education is more important than ever in national defense and unity under our democratic ideals.

The citizens of this section of the city, both old and young are to be congratulated on having such a school placed in their midst. Its beauty will remain intact thru the years because each child will be intensely proud to be a pupil there and will always be careful in the use of the attractive walls, floors and equipment. The desks, tables, chairs and shades are the last word in utility, durability and beauty. The modern conception is that children learn better and are better citizens in attractive surroundings with noise cut to a minimum by acoustical treatment of ceilings. The building will be used as a center for the activities of the adults of the adjacent homes and they too will want its loveliness undimmed by time. All cannot help but be uplifted by such an artistic edifice.

The added beauty and utility have been purchased at no extra cost to the taxpayers. The cubic contents are 287,199 feet and the general contract cost is 30.7 cents per cubic foot, which when the increase in cost of materials and labor is considered, makes it a little less expensive than the other school buildings which have been constructed here in recent years. The Jefferson School with a cubic content of 135,000 feet was built in 1932 and would have cost 31.4 cents per cubic foot had it been constructed today.
